



ENGINE

Model	Isuzu AQ-4HK1X
Emissions Certification	Tier 4 Final
Fuel	Requires ultra low-sulfur fuel B5 biodiesel tolerant
Type	Water-cooled, 4-cycle diesel, high pressure common rail system – electric control, VGT Turbocharger w/ air cooled intercooler, SCR system
Cylinders	4-cylinder in-line
Displacement	317 in ³ (5.2 L)
Bore/Stroke	4.53 x 4.92 in (115 x 125 mm)
Fuel injection	Direct injection – electronic
Fuel filter	Replaceable, full flow spin-on cartridge
Air filter	Dry type element w/ warning restriction indicator
Oil filter	Replaceable, full flow spin-on cartridge
Engine gradeability:	
Side-to-side	35°
Fore and aft	35°
Net horsepower – SAE J1349 @ 2000 RPM:	177 hp (132.1 kW)
Net max. torque – SAE J1349 @ 1800 RPM:	458 lbf-ft (621 N-m)
Cooling operating range:	113° to -4°F (45° to -20°C)
Oil	Requires low-ash oil CJ-4

DRIVETRAIN

Travel control	Dual stage relief/ counter balance design
Brakes	Mechanical disc
Service brakes	SAHR disc – each motor
Two speed travel:	
Max. high speed	3.4 mph (5.5 km/h)
Max. low speed	2.2 mph (3.5 km/h)
Automatic downshift	3.5
Drawbar pull	44,962 lbf (200 kN)
Gradeability	70% – 35° Slope

ELECTRICAL

Voltage	24 Volts
Alternator rating	50 amp
Batteries	2 x 12 Volt
Battery reserve capacity	92 Ah/5 hour
Work lights – 4	24 Volt/70 watt
1 boom, 1 upper, 2 cab	

OPERATOR ENVIRONMENT

Air conditioner output	18,100 BTU/hr
Heater output	20,150 BTU/hr
Sound level inside cab – ISO6396	70 dBA
Electrical outlet	12 Volt
Cab interior light	10 watt
Rear view camera	Standard
Seat	Air-suspension, heated and 65° tiltable
Monitor:	
Rear view and side view – optional camera display; Mode 1: work mode; Travel mode; Attachment selection; Auto idle indicator; Fuel consumption gauge; Power boost icon; Fuel bar graph; Oil temperature bar graph; DEF/AdBlue bar graph; Auto glow indicator; Auxiliary mode display; Hour meter; Camera angle indicator; Mode 2: free swing/swing lock indicator; Light icon; Wiper icon; Mute icon; Seat belt icon; Warning messages; Time and date; Water temperature bar graph; DEF/AdBlue refill icon; Anti-theft icon; DTC indicator; Low output icon; SCR cleaning icon; SCR warning icons; Freeze protection; Trip meter; Pressure reading.	

Seat:

High-back seat w/ heat and air suspension; Adjustments: 65° tilt, manual weight, seat height, headrest, lumbar support, backrest angle, pivoting armrests linked to consoles; Retractable seat belt and control consoles adjust independently of seat.

CX250D

LONG REACH EXCAVATOR (LR)

LONG UNDERCARRIAGE (LC)

TIER 4 FINAL CERTIFIED

ATTACHMENT

Boom	33 ft 10 in (10.3 m)
Arm options	26 ft 3 in (8.0 m)
Bucket digging force*	17,310 lbf (77 kN)

NOTE: *Digging force ratings based on ISO6015.

OPERATING WEIGHT

Operating weight	63,523 lb (28 814 kg)
w/ shoes	2 ft 7 in (800 mm)
w/ boom	33 ft 10 in (10.3 m)
w/ arm	26 ft 3 in (8.0 m)
w/ bucket	750 lb (340 kg)
w/ counterweight	16,204 lb (7 350 kg)

NOTE: W/ operator/full fuel/standard equipment.

GROUND PRESSURE

@ Standard operating weight 6.2 psi (0.43 bar)
w/ 31.5 in (800 mm) triple semi-grouser shoes

HYDRAULICS

System design	Open center
Main pumps	Two-variable displacement axial piston pumps w/ regulating system
Max. rated flow	61.8 gpm (234 L/min)
System pressures:	
Boom, arm and bucket	4,975 psi (343 bar)
w/ Power Boost	5,410 psi (373 bar)
Travel circuits	4,975 psi (343 bar)
Swing circuits	3,916 psi (270 bar)
Pilot pump	1 x gear design
Max. capacity	5.3 gpm (20 L/min)
Controls	w/ boom/arm holding valve
Right track travel, bucket, boom and arm acceleration.	1 x Four-spool section
Left track travel, auxiliary, swing, boom and arm acceleration.	1 x Five-spool section
Work mode selections	SP: Speed Priority H: Heavy-Duty A: Automatic
Swing motor	Fixed displacement axial piston
Swing final drive	Planetary gear reduction
Travel motor	Two-speed independent travel/axial piston

HYDRAULIC CYLINDERS

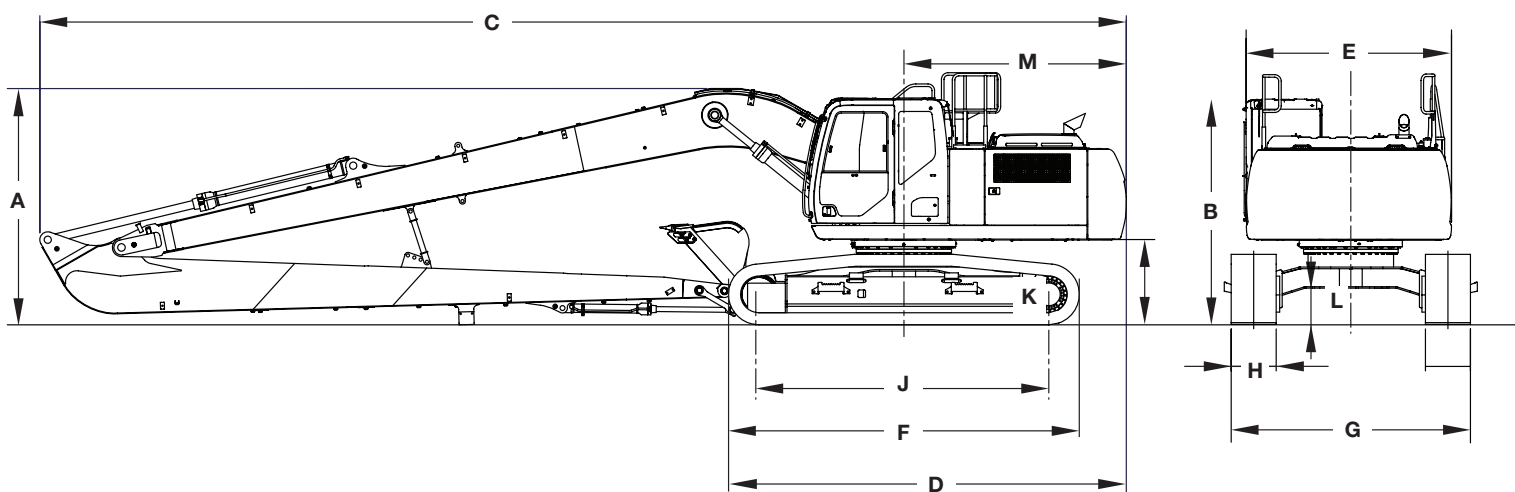
Boom cylinders	Two (2)
Cylinder bore	5.1 in (130 mm)
Cylinder rod diameter	3.5 in (90 mm)
Cylinder stroke	52.6 in (1 335 mm)
Arm cylinder	One (1)
Cylinder bore	5.9 in (150 mm)
Cylinder rod diameter	4.1 in (105 mm)
Cylinder stroke	68.4 in (1 737 mm)
Bucket cylinder	One (1)
Cylinder bore	3.7 in (95 mm)
Cylinder rod diameter	2.6 in (65 mm)
Cylinder stroke	34.7 in (881 mm)

SERVICE CAPACITIES

Fuel tank	108.3 gal (410 L)
Hydraulic system	66.0 gal (250 L)
Hydraulic tank	38.8 gal (147 L)
Engine oil w/ filter	6.1 gal (23.1 L)
Swing drive	2.6 gal (9.7 L)
Final drive	1.3 gal (5 L)
Cooling system	8.3 gal (31.4 L)
DEF tank	31.7 gal (120 L)

OTHER SPECIFICATIONS

Swing speed	10.6 RPM
Swing torque	51,482 lbf-ft (69.8 kN-m)
Swing brake	Mechanical disc
Undercarriage:	
Length	15 ft 3 in (4 650 mm)
Track gauge	8 ft 6 in (2 590 mm)
Carrier rollers	2
Track rollers	9
Shoes – triple grouser	51
Shoe width – std.	2 ft 7 in (800 mm)
Link pitch	7.5 in (190 mm)
Track:	
Chain	Grease lubricated/strutted
Guides	Single
Adjustment	Hydraulic

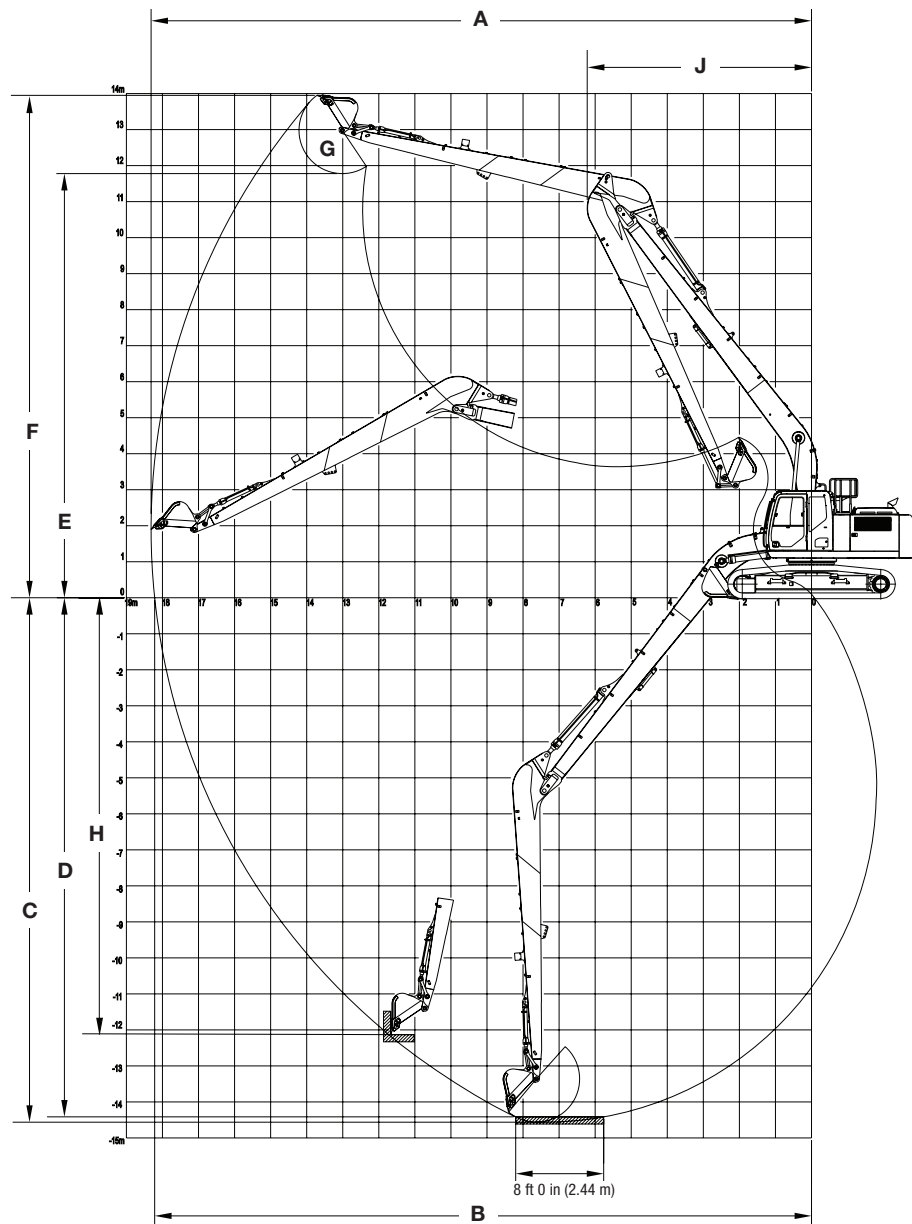


Line drawings are for illustrative purpose only and may not be exact representation of unit.

DIMENSIONS

	26 ft 3 in (8.0 m) Arm
A. Overall height – with attachment	10 ft 3 in (3 130 mm)
B. Cab height	10 ft 0 in (3 050 mm)
Overall height to top of guardrail	10 ft 11 in (3 340 mm)
C. Overall length – with attachment	47 ft 2 in (14 380 mm)
D. Overall length – without attachment	17 ft 3 in (5 270 mm)
E. Width of upper structure	9 ft 1 in (2 770 mm)
F. Track overall length	15 ft 3 in (4 650 mm)
G. Track overall width with 31.5 in (800 mm) shoes	11 ft 1 in (3 390 mm)
H. Track shoe width	2 ft 7 in (800 mm)
J. Center to center – idler to sprocket	12 ft 7 in (3 840 mm)
K. Upper structure ground clearance	3 ft 7 in (1 100 mm)
L. Minimum ground clearance	1 ft 5 in (440 mm)
M. Rear tail swing radius	9 ft 8 in (2 950 mm)
Operating weight*	63,523 lb (28 814 kg)
Ground pressure	6.2 psi (0.43 bar)

NOTE: *With 33 ft 10 in (10.30 m) boom, 31.5 in (800 mm) track shoe, 750 lb (340 kg) bucket, 165 lb (75 kg) operator, full fuel and standard equipment.



PERFORMANCE SPECS

26 ft 3 in (8.0 m) Arm

A. Maximum dig radius	60 ft 1 in (18 320 mm)
B. Dig radius at groundline	59 ft 9 in (18 220 mm)
C. Maximum dig depth	47 ft 9 in (14 560 mm)
D. Dig depth- 8 ft 0 in (2.44 m) level bottom	47 ft 3 in (14 410 mm)
E. Dump height	38 ft 8 in (11 780 mm)
F. Maximum reach height	45 ft 9 in (13 950 mm)
G. Bucket rotation	178°
H. Maximum vertical wall dig depth	39 ft 10 in (12 130 mm)
J. Minimum swing radius	20 ft 5 in (6 220 mm)
Arm digging force: Standard	9,060 lbf (40 kN)
Bucket digging force: Standard	17,310 lbf (77 kN)

LIFT CAPACITIES

26 ft 3 in (8.00 m) Lift capacities using a 750 lb (340 kg) bucket, 16,204 lb (7 350 kg) counterweight.

Load (Lift Point Height)	MINIMUM REACH			5 ft (1.5 m)		10 ft (3 m)		15 ft (4.5 m)		20 ft (6 m)		25 ft (7.5 m)		30 ft (9 m)	
	@	END	SIDE	END	SIDE	END	SIDE	END	SIDE	END	SIDE	END	SIDE	END	SIDE
+40 ft (12 m)	44 ft 5 in (13.56 m)	3,450 lb* (1 630 kg)*	3,450 lb* (1 630 kg)*												
+35 ft (10.5 m)	44 ft 10 in (13.65 m)	3,600 lb* (1 640 kg)*	3,600 lb* (1 640 kg)*												
+30 ft (9 m)	44 ft 3 in (13.46 m)	3,650 lb* (1 670 kg)*	3,650 lb* (1 670 kg)*												
+25 ft (7.5 m)	42 ft 9 in (12.98 m)	3,850 lb* (1 750 kg)*	3,850 lb* (1 750 kg)*												
+20 ft (6 m)	40 ft 1 in (12.14 m)	4,200 lb* (1 920 kg)*	4,200 lb* (1 920 kg)*												
+15 ft (4.5 m)	35 ft 2 in (10.61 m)	5,150 lb* (2 360 kg)*	5,150 lb* (2 360 kg)*												
+10 ft (3 m)	6 ft 1 in (1.88 m)	5,450 lb* (2 480 kg)*	5,450 lb* (2 480 kg)*			8,600 lb* (3 810 kg)*	8,600 lb* (3 810 kg)*	5,800 lb* (3 070 kg)*	5,800 lb* (3 070 kg)*	4,750 lb* (2 490 kg)*	4,750 lb* (2 490 kg)*	7,900 lb* (3 690 kg)*	7,900 lb* (3 690 kg)*	6,750 lb* (3 120 kg)*	6,750 lb* (3 120 kg)*
+5 ft (1.5 m)	7 ft 1 in (2.15 m)	1,400 lb* (630 kg)*	1,400 lb* (630 kg)*			4,650 lb* (1 980 kg)*	4,650 lb* (1 980 kg)*	16,400 lb* (7 470 kg)*	16,400 lb* (7 470 kg)*	12,200 lb* (5 670 kg)*	12,200 lb* (5 670 kg)*	9,450 lb* (4 370 kg)*	9,450 lb* (4 370 kg)*	7,750 lb* (3 590 kg)*	7,750 lb* (3 590 kg)*
Groundline	3 ft 3 in (0.98 m)	1,400 lb* (620 kg)*	1,400 lb* (620 kg)*	1,450 lb* (650 kg)*	1,450 lb* (650 kg)*	3,400 lb* (1 490 kg)*	3,400 lb* (1 490 kg)*	8,450 lb* (3 680 kg)*	8,450 lb* (3 680 kg)*	14,250 lb* (6 600 kg)*	13,200 lb* (6 100 kg)*	10,800 lb* (4 990 kg)*	9,750 lb* (4 520 kg)*	8,700 lb* (4 020 kg)*	7,500 lb* (3 480 kg)*
-5 ft (-1.5 m)	0 ft 0 in (0 m)	2,550 lb* (1 150 kg)*	2,550 lb* (1 150 kg)*	2,600 lb* (1 180 kg)*	2,600 lb* (1 180 kg)*	3,950 lb* (1 760 kg)*	3,950 lb* (1 760 kg)*	7,200 lb* (3 170 kg)*	7,200 lb* (3 170 kg)*	14,500 lb* (6 290 kg)*	11,900 lb* (5 530 kg)*	11,900 lb* (5 490 kg)*	8,850 lb* (4 110 kg)*	9,500 lb* (4 390 kg)*	6,850 lb* (3 190 kg)*
-10 ft (-3 m)	0 ft 0 in (0 m)	3,450 lb* (1 550 kg)*	3,450 lb* (1 550 kg)*	3,700 lb* (1 670 kg)*	3,700 lb* (1 670 kg)*	4,900 lb* (2 190 kg)*	4,900 lb* (2 190 kg)*	7,500 lb* (3 310 kg)*	7,500 lb* (3 310 kg)*	12,700 lb* (5 560 kg)*	11,150 lb* (5 180 kg)*	12,650 lb* (5 850 kg)*	8,250 lb* (3 820 kg)*	10,150 lb* (4 680 kg)*	6,400 lb* (2 970 kg)*
-15 ft (-4.5 m)	0 ft 0 in (0 m)	4,450 lb* (2 000 kg)*	4,450 lb* (2 000 kg)*	4,850 lb* (2 160 kg)*	4,850 lb* (2 160 kg)*	6,000 lb* (2 680 kg)*	6,000 lb* (2 680 kg)*	8,250 lb* (3 670 kg)*	8,250 lb* (3 670 kg)*	12,750 lb* (5 580 kg)*	10,800 lb* (5 010 kg)*	12,950 lb* (6 010 kg)*	7,850 lb* (3 660 kg)*	9,950 lb* (4 610 kg)*	6,100 lb* (2 830 kg)*
-20 ft (-6 m)	0 ft 0 in (0 m)	5,450 lb* (2 440 kg)*	5,450 lb* (2 440 kg)*	6,000 lb* (2 680 kg)*	6,000 lb* (2 680 kg)*	7,200 lb* (3 220 kg)*	7,200 lb* (3 220 kg)*	9,350 lb* (4 160 kg)*	9,350 lb* (4 160 kg)*	13,600 lb* (5 970 kg)*	10,800 lb* (5 000 kg)*	12,800 lb* (5 940 kg)*	7,750 lb* (3 610 kg)*	9,800 lb* (4 540 kg)*	5,950 lb* (2 760 kg)*
-25 ft (-7.5 m)	0 ft 0 in (0 m)	6,500 lb* (2 910 kg)*	6,500 lb* (2 910 kg)*	7,250 lb* (3 230 kg)*	7,250 lb* (3 230 kg)*	8,450 lb* (3 760 kg)*	8,450 lb* (3 760 kg)*	10,750 lb* (4 760 kg)*	10,750 lb* (4 760 kg)*	15,150 lb* (6 630 kg)*	10,900 lb* (5 070 kg)*	12,850 lb* (5 950 kg)*	7,800 lb* (3 630 kg)*	9,800 lb* (4 540 kg)*	5,950 lb* (2 770 kg)*
-30 ft (-9 m)	0 ft 0 in (0 m)	7,600 lb* (3 400 kg)*	7,600 lb* (3 400 kg)*	8,600 lb* (3 830 kg)*	8,600 lb* (3 830 kg)*	10,100 lb* (4 480 kg)*	10,100 lb* (4 480 kg)*	12,750 lb* (5 610 kg)*	12,750 lb* (5 610 kg)*	16,100 lb* (7 460 kg)*	11,200 lb* (5 200 kg)*	12,750 lb* (5 910 kg)*	8,000 lb* (3 710 kg)*	9,900 lb* (4 600 kg)*	6,100 lb* (2 830 kg)*
-35 ft (-10.5 m)	2 ft 0 in (0.49 m)	8,700 lb* (3 850 kg)*	8,700 lb* (3 850 kg)*	10,100 lb* (4 540 kg)*	10,100 lb* (4 540 kg)*	12,150 lb* (5 380 kg)*	12,150 lb* (5 380 kg)*	15,350 lb* (6 740 kg)*	15,350 lb* (6 740 kg)*	14,950 lb* (6 970 kg)*	11,650 lb* (5 390 kg)*	11,950 lb* (5 560 kg)*	8,350 lb* (3 860 kg)*	9,750 lb* (4 550 kg)*	6,400 lb* (2 950 kg)*
-40 ft (-12 m)	7 ft 1 in (1.91 m)	11,850 lb* (5 120 kg)*	11,850 lb* (5 120 kg)*			14,400 lb* (6 430 kg)*	14,400 lb* (6 430 kg)*	17,000 lb* (7 840 kg)*	17,000 lb* (7 840 kg)*	13,150 lb* (6 180 kg)*	12,300 lb* (5 670 kg)*	10,500 lb* (4 950 kg)*	8,850 lb* (4 080 kg)*	8,550 lb* (4 040 kg)*	6,850 lb* (3 140 kg)*
-45 ft (-13.5 m)	17 ft 4 in (4.56 m)	25,650 lb* (6 240 kg)*	25,650 lb* (6 240 kg)*							10,200 lb* (4 940 kg)*	10,200 lb* (4 940 kg)*	8,050 lb* (3 930 kg)*	8,050 lb* (3 930 kg)*		

NOTE: *Following number indicates hydraulic capacity.

LIFT CAPACITIES

26 ft 3 in (8.00 m) Lift capacities using a 750 lb (340 kg) bucket, 16,204 lb (7 350 kg) counterweight.

Load (Lift Point Height)	35 ft (10.5 m)		40 ft (12 m)		45 ft (13.5 m)		50 ft (15 m)		55 ft (16.5 m)		(18 m)		MAXIMUM REACH		
	END	SIDE	END	SIDE	END	SIDE	END	SIDE	END	SIDE	END	SIDE	@	END	SIDE
+40 ft (12 m)					3,450 lb*	3,450 lb*							48 ft 9 in (15 m)	2,850 lb* (1 290 kg)*	2,850 lb* (1 290 kg)*
+35 ft (10.5 m)					3,650 lb*	3,650 lb*	3,550 lb* (1 630 kg)*	3,550 lb* (1 630 kg)*					44 ft 10 in (15.93 m)	2,800 lb* (1 260 kg)*	2,800 lb* (1 260 kg)*
+30 ft (9 m)					3,700 lb* (1 670 kg)*	3,700 lb* (1 670 kg)*	3,750 lb* (1 700 kg)*	3,750 lb* (1 700 kg)*	(1 390 kg)*	(1 390 kg)*			44 ft 3 in (16.66 m)	2,750 lb* (1 250 kg)*	2,750 lb* (1 250 kg)*
+25 ft (7.5 m)					3,850 lb* (1 750 kg)*	3,850 lb* (1 750 kg)*	3,850 lb* (1 750 kg)*	3,850 lb* (1 750 kg)*	3,550 lb* (1 700 kg)*	3,100 lb (1 470 kg)			42 ft 9 in (17.22 m)	2,800 lb* (1 260 kg)*	2,800 lb* (1 260 kg)*
+20 ft (6 m)					4,100 lb* (1 870 kg)*	4,100 lb* (1 870 kg)*	4,000 lb* (1 820 kg)*	3,850 lb (1 800 kg)*	3,850 lb* (1 780 kg)*	3,000 lb (1 420 kg)			40 ft 1 in (17.62 m)	2,850 lb* (1 280 kg)*	2,600 lb (1 170 kg)
+15 ft (4.5 m)			4,700 lb* (2 180 kg)*	4,700 lb* (2 180 kg)*	4,400 lb* (2 030 kg)*	4,400 lb* (2 030 kg)*	4,200 lb* (1 920 kg)*	3,700 lb (1 730 kg)	4,050 lb* (1 870 kg)*	2,900 lb (1 360 kg)			35 ft 2 in (17.89 m)	2,900 lb* (1 320 kg)*	2,400 lb (1 080 kg)
+10 ft (3 m)	5,900 lb* (2 740 kg)*	5,900 lb* (2 740 kg)*	5,300 lb* (2 440 kg)*	5,300 lb* (2 440 kg)*	4,800 lb* (2 220 kg)*	4,350 lb (2 040 kg)	4,500 lb* (2 060 kg)*	3,450 lb (1 630 kg)	4,250 lb* (1 950 kg)*	2,750 lb (1 300 kg)	(1 400 kg)*	(1 020 kg)	6 ft 1 in (18.02 m)	3,050 lb* (1 380 kg)*	2,250 lb (1 010 kg)
+5 ft (1.5 m)	6,650 lb* (3 070 kg)*	6,400 lb (2 970 kg)	5,850 lb* (2 700 kg)*	5,100 lb (2 380 kg)	5,250 lb* (2 420 kg)*	4,100 lb (1 910 kg)	4,800 lb* (2 210 kg)*	3,250 lb (1 530 kg)	4,350 lb (2 030 kg)*	2,600 lb (1 230 kg)	(1 490 kg)*	(970 kg)	7 ft 1 in (18.02 m)	3,200 lb* (1 460 kg)*	2,150 lb (970 kg)
Groundline	7,350 lb* (3 660 kg)*	5,900 lb (2 750 kg)	6,350 lb* (2 940 kg)*	4,700 lb (2 200 kg)	5,650 lb* (2 610 kg)*	3,800 lb (1 780 kg)	5,050 lb (2 340 kg)	3,050 lb (1 440 kg)	4,200 lb (1 970 kg)	2,450 lb (1 160 kg)			3 ft 3 in (17.09 m)	3,450 lb* (1 560 kg)*	2,100 lb (950 kg)
-5 ft (-1.5 m)	7,950 lb* (3 660 kg)*	5,450 lb (2 540 kg)	6,850 lb* (3 150 kg)*	4,400 lb (2 040 kg)	5,800 lb (2 700 kg)	3,550 lb (1 660 kg)	4,850 lb (2 260 kg)	2,900 lb (1 350 kg)	4,100 lb (1 910 kg)	2,350 lb (1 100 kg)			0 ft 0 in (17.64 m)	3,700 lb* (1 680 kg)*	2,100 lb (950 kg)
-10 ft (-3 m)	8,200 lb (3 810 kg)	5,100 lb (2 370 kg)	6,700 lb (3 130 kg)	4,100 lb (1 920 kg)	5,600 lb (2 600 kg)	3,350 lb (1 570 kg)	4,700 lb (2 190 kg)	2,750 lb (1 290 kg)	4,000 lb (1 870 kg)	2,250 lb (1 060 kg)			0 ft 0 in (17.24 m)	3,800 lb (1 730 kg)	2,150 lb (970 kg)
-15 ft (-4.5 m)	7,950 lb (3 690 kg)	4,850 lb (2 250 kg)	6,500 lb (3 030 kg)	3,900 lb (1 830 kg)	5,450 lb (2 540 kg)	3,200 lb (1 500 kg)	4,600 lb (2 150 kg)	2,650 lb (1 250 kg)	(1 850 kg)	(1 040 kg)			0 ft 0 in (16.7 m)	4,000 lb (1 810 kg)	2,250 lb (1 020 kg)
-20 ft (-6 m)	7,800 lb (3 630 kg)	4,700 lb (2 190 kg)	6,400 lb (2 980 kg)	3,850 lb (1 780 kg)	5,400 lb (2 500 kg)	3,150 lb (1 470 kg)	4,600 lb (2 140 kg)	2,650 lb (1 230 kg)					0 ft 0 in (16 m)	4,300 lb (1 940 kg)	2,450 lb (1 100 kg)
-25 ft (-7.5 m)	7,800 lb (3 630 kg)	4,750 lb (2 200 kg)	6,450 lb (2 990 kg)	3,850 lb (1 790 kg)	5,450 lb (2 520 kg)	3,200 lb (1 490 kg)	(2 170 kg)	(1 260 kg)					0 ft 0 in (15.12 m)	4,750 lb (2 130 kg)	2,750 lb (1 230 kg)
-30 ft (-9 m)	7,950 lb (3 670 kg)	4,850 lb (2 250 kg)	6,550 lb (3 040 kg)	4,000 lb (1 840 kg)	5,600 lb (2 580 kg)	3,350 lb (1 550 kg)							0 ft 0 in (14.03 m)	5,400 lb (2 420 kg)	3,200 lb (1 440 kg)
-35 ft (-10.5 m)	8,050 lb (3 730 kg)	5,100 lb (2 360 kg)*	6,650 lb* (3 100 kg)	4,250 lb (1 960 kg)									2 ft 0 in (12.67 m)	6,300 lb* (2 840 kg)*	3,950 lb (1 750 kg)
-40 ft (-12 m)	6,850 lb* (3 280 kg)*	5,350 lb (2 540 kg)											7 ft 1 in (10.96 m)	6,750 lb* (3 050 kg)*	5,250 lb (2 290 kg)
-45 ft (-13.5 m)													17 ft 4 in (8.7 m)	7,150 lb* (3 220 kg)*	7,150 lb* (3 220 kg)*

NOTE: *Following number indicates hydraulic capacity.

STANDARD EQUIPMENT

ENGINE

Isuzu AQ-4HK1X
Tier 4 Final Certified
Selective Catalytic Reduction – SCR
Diesel Oxidation Catalyst – DOC
Cooled Exhaust Gas Recirculation – CEGR
EGR Coolers
Four-cylinder turbo-charged diesel
VGT turbocharger
Electronic fuel injection
High pressure common rail system
Neutral safety start
Auto-engine warm up
Glow-plug pre-heat
Fuel Economy Assist System – FEA
Engine Protection Feature – EPF
Dual-stage fuel filtration
Dual element air filter
Remote oil filter
Drain for fuel tank
Remote engine oil drain
500-hour engine oil change interval
24 Volt system
Engine oil sample port
Battery disconnect switch
Emergency engine stop
External Fuel and DEF gauges
Fan housing
Fuel cooler
Fuel filter restriction indicator
Fuel shut-off valve
Idle start
Radiator, oil cooler,
intercooler – protective screen

FUEL ECONOMY SYSTEMS

Engine Idle/Fuel Economy System:
Auto-idle
One-touch idle
Auto-idle shut-down
BEC – Boom Economy Control
AEC – Auto Economy Control
SWC – Swing Relief Control
SSC – Spool Stroke Control

HYDRAULICS

Auto power boost
Auto swing priority
Arm speed assistance – 2 pump flow
Auxiliary flow control
Auxiliary valve
Boom speed assistance – 2 pump flow
Bucket curl assist
Control levers pre-wired for
auxiliary hydraulics
Electronically controlled hydraulic pumps
Holding valve – Boom and Arm
Fire wall
Hydraulic filter restriction indicator
Neutral pump de-stroke
Oil cooler
Power save
Pump stand-by pressure

Auto travel speed change
Selectable work modes
Free swing
Hydraulic oil sample port
Control pattern selector
Pre-set auxiliary pump settings
Auxiliary valve
5,000-hour hydraulic oil change interval
1,000-hour hydraulic filter change interval
SAHR brake

UPPER STRUCTURE

ISO mirrors – 3
Cab ISO-Mounts – fluid and spring
Upper mounted work light – 70 watt
Swivel guard belly pan
Center cover – over main CV
Fuel tank belly pan
Handrail – RH access
ISO guard rails
Lifting eyes for counterweight
Lockable fuel cap, service doors and toolbox

ATTACHMENTS

Boom – 33 ft 10 in (10.30 m)
Arm – 26 ft 3 in (8.00 m)
Heavy-duty bucket linkage
Boom mounted work light – 70 watt
Auxiliary pipe brackets
Centralized grease fittings
Attachment cushion valve
Arm and boom regeneration
Bucket anti-clatter device
Chrome pins
Easy Maintenance System (EMS) bushings
Teardrop pin retention keepers

OPERATOR ENVIRONMENT

ROPS protection
FOPS cab top guard – Level 1
Pressurized cab
Face vent
Cab lights – 2
Interior dome light
One-touch lock front window
One piece window – right
Safety glass windows
Gate lock hydraulic activation
Emergency exit and hammer
Clear polycarbonate roof window with
sunshade
AC/heat/defrost with auto climate control
LED Color monitor – 7 in (180 mm)
26 selectable languages for monitor
On-board diagnostic system
10 programmable attachments settings on
monitor – 5 single flow, 5 dual flow
Seat belt – 3 in (76 mm)
Heated high-back cloth seat with air
suspension and 65° tilt adjustment
Sliding seat – 3.54 in (90 mm)
Adjustable armrests
Tilting consoles – 4-position

Sliding cockpit – 3.15 in (80 mm)
Low-effort joystick controls
Controls pre-wired for auxiliary
Single pedal travel
Straight travel
AM/FM radio with antenna, 2 speakers and
Bluetooth capabilities
Aux-in port for personal electronics
Radio mute switch – joystick
Rear-view camera
Anti-theft system – start code system
Rubber floormat
12 Volt electric outlet
24 Volt cigarette lighter
Windshield wiper/washer
Cup holder
Storage compartments
Warm/cool storage compartment
Travel alarm with cancel switch
Ignition keys
One key start & lock-up
Cab filter – external
Cab handrails
Operator's manual

UNDERCARRIAGE

Long undercarriage
31.5 in (800 mm) steel shoes,
triple semi-grouser
Full overlap turntable bearing tub
Single track chain guides
Hydraulic track adjustment
Sealed link chain
Steps
Carbody belly pan – swivel guard
X-pattern carbody
Lashing points – tie downs
Extra Filter Kit:
Engine oil filter
Filter wrench
Fuel filters
Grease gun
Green plug oil drain hose for engine
oil drain
Hydraulic return filter
Pilot circuit hydraulic filter

TELEMATICS

CASE SiteWatch™ Telematics – includes
hardware and a 3-yr Advanced
data subscription

OPTIONAL EQUIPMENT

ENGINE

Refueling pump
Air pre-cleaner – Cyclone
High ambient temperature cooling package

HYDRAULICS

Auxiliary hydraulics:
Secondary low-flow/joystick activated
Proportional hydraulic controls
Hose Burst Check Valve – HBCV

ATTACHMENTS

Tools:
Heavy-duty/Extreme-duty/
Ditching Buckets
Load holding control

UPPER STRUCTURE

Rubber bumper guard – order through
Service Parts

UNDERCARRIAGE

Track guides – triple

OPERATOR ENVIRONMENT

FOPS cab top guard – Level 2
Front grill guard – 2 x 2 in (50.8 x 50.8 mm)
screen mesh
Front rock guard – vertical bars
Two piece/OPG 1
Front rock guard – vertical bars
One piece/OPG 2
Vandal guard (front window) with
common key
Rain deflector – not available with
Front guards
Sun visor
Side-view camera
LED Package:
Includes 1 Side view camera and 6 LED
Lights – 2 front cab mounted, 2 rear
mounted and 1 mounted on each side

CaseCE.com

©2016 CNH Industrial America LLC. All rights reserved. CASE is a trademark registered in the United States and many other countries, owned by or licensed to CNH Industrial N.V., its subsidiaries or affiliates. CNH Industrial Capital is a trademark in the United States and many other countries, owned by or licensed to CNH Industrial N.V., its subsidiaries or affiliates. Printed in U.S.A. Contains 10% post-consumer fiber.

IMPORTANT: CASE Construction Equipment Inc. reserves the right to change these specifications without notice and without incurring any obligation relating to such change. Availability of some models and equipment builds vary according to the country in which the equipment is used. The illustrations and text may include optional equipment and accessories and may not include all standard equipment. Your CASE dealer/distributor will be able to give you details of the products and their specifications available in your area.



CASE Construction Equipment is biodiesel-friendly. NOTE: All engines meet current EPA emissions regulations. All specifications are stated in accordance with SAE Standards or Recommended Practices, where applicable.

Always read the Operator's Manual before operating any equipment. Inspect equipment before using it, and be sure it is operating properly. Follow the product safety signs and use any safety features provided.

Form No. CCE201601CX250DLRLC
Replaces Form No. CCE201503CX250DLRLC

CX250D LR LC

7 of 7